

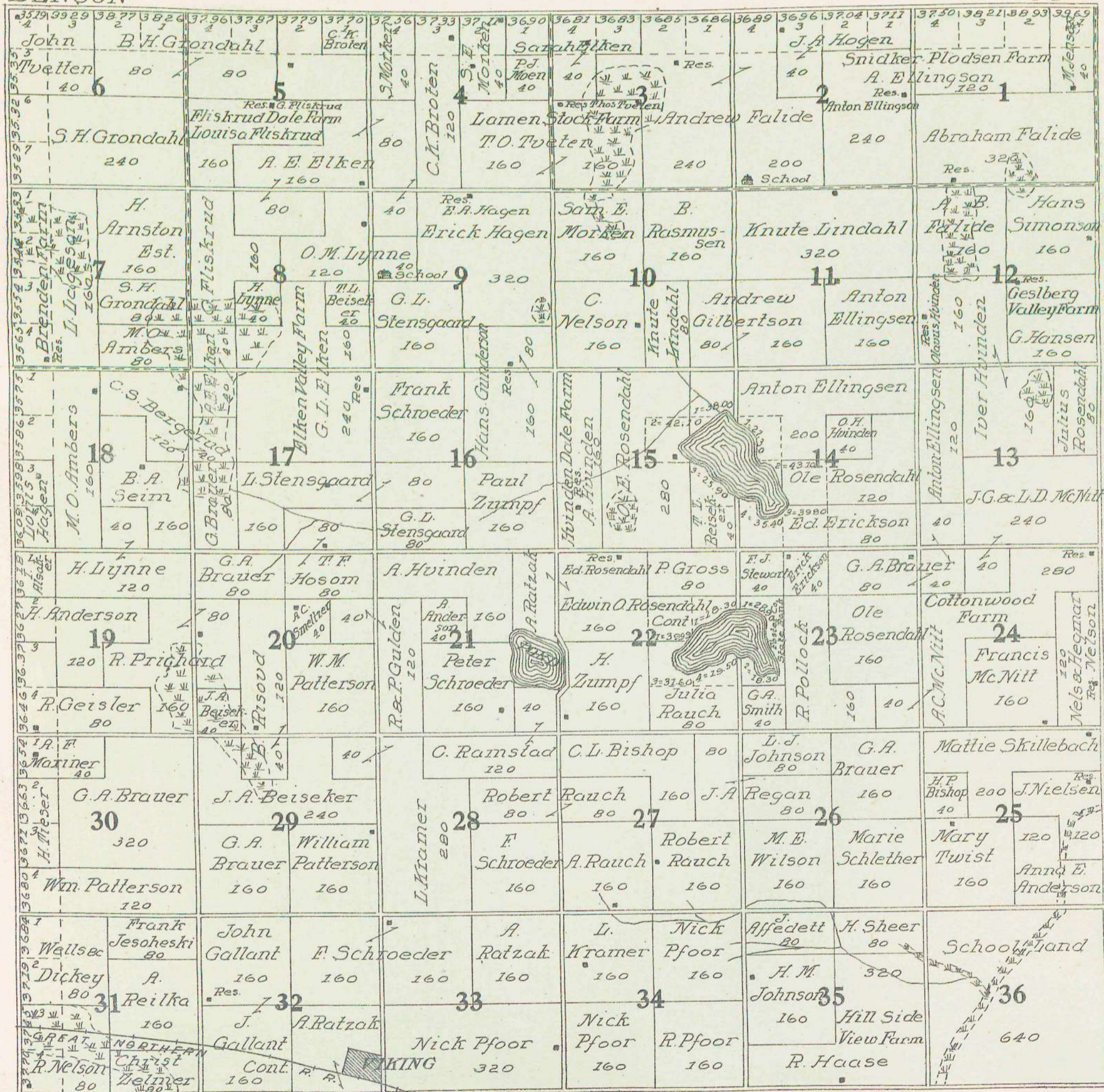




**MAP OF**  
**TOWNSHIP 150 N., RANGE 69 W.**  
 of the 5th P. M.  
 Scale 1 1/4 inches to 1 mile

BENSON

CO.





MAP OF  
**TOWNSHIP 150 N., RANGE 70 W.**  
of the 5th P. M.  
Scale 1 1/4 inches to 1 mile

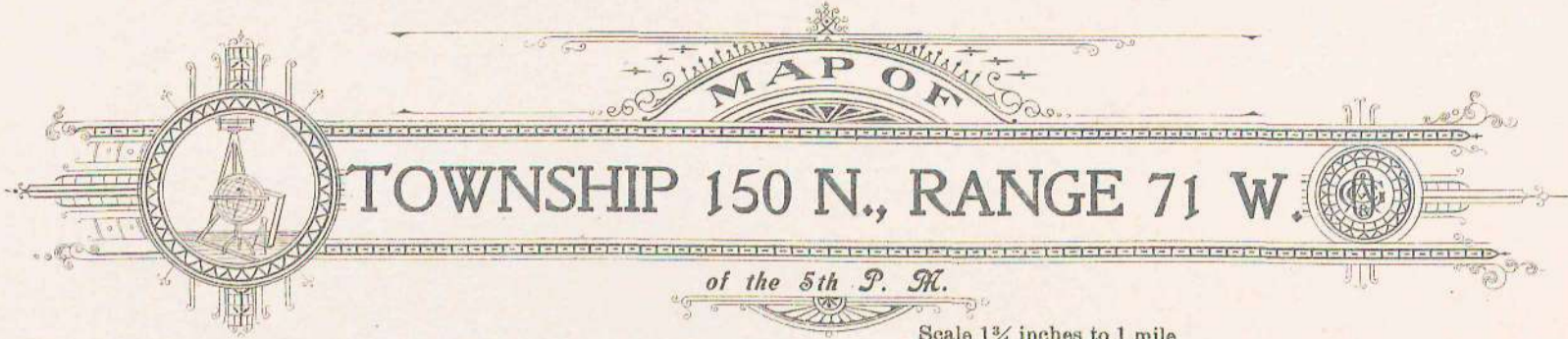
**HEIMDAL TOWNSHIP**

**BENSON**

**CO.**

3798 10 John son	4005 3 Ole Robole	4008 2 Otto	4011 1 Solen 80	4010 4 Otto	4002 2 Hawkinson 80	3994 1 Olaf	3996 3 Mail Bk. Faiton 40	3998 2 Peter Strum 120	4003 3 Johnson 120	4008 1 Oleson	4007 4 C. O. Lund 120	3999 2 Henry 40	3993 1 O.A. Henry	3994 4 Henry 80	3996 3 Schmitt	3998 2 Schmitt
5 A.P. Sandstrom 160	6 A.F. Johnson 160	7 Syverson 80	8 C.G. Johnson 240	9 John Johnson 40	10 Ole Nelson 40	11 Lars Anderson 40	12 N.F. Nelson 240	13 H. Anderson 160	14 Frank A. Henry 160	15 L.H. Frederick 160	16 N.A. Wisness 160	17 J.M. Arne C. Bellerud 80	18 280	19	20	21
1 Carl E. Benson 80	2 N. Benson 160	3 L. Anderson 160	4 John Johnson 80	5 Ole Nelson 80	6 A. Anderson 80	7 Ole Nelson 80	8 F.O. Johnson 160	9 L.A. Johnson 160	10 H. Anderson 160	11 O. Twetien 53 1/2	12 C. Brandvold 160	13 Thos Rossum 160	14 E.M. Stoa 160	15 Roger Logeson 120	16	17
1 John Kramer 80	2 I. Bilgmeier 160	3 Otto Sole 160	4 Otto O. Sole 160	5 A. Anderson 80	6 M. Hendrick- son 80	7 H. Anderson 80	8 F.O. Johnson 160	9 L.A. Johnson 160	10 H. Anderson 160	11 Res. 373 1/2	12 C. Brandvold 160	13 Thos Rossum 160	14 E.M. Stoa 160	15 Roger Logeson 120	16	17
1 Gilbert Melaas 80	2 G. Carlson 120	3 S. Stolle 160	4 Martin Melaas 160	5 Andrew Fossen 160	6 Ludwig Bilgmeier 160	7 M.H. Hendrickson 160	8 E.J. Pletan 160	9 C. Zellmer 200	10 School Land 320	11 Ole H. Backen 240	12 P.A. 80	13 H. Logeson 80	14 John E. Johnson 160	15 State Land	16 Louis Hagen 160	17
1 Severn Rogness 80	2 L. S. Wallefson 80	3 I. Guarve 80	4 L. Gurve 80	5 Carrie Zellmer 160	6 G. Schroeden 160	7 Ole P. Gaarder 160	8 State Land 640	9 P. Johnson 160	10 Peter Myhre 160	11 Frances Dusek 160	12 August Pitzke 120	13 Aug. Matte 160	14 J. Geske 160	15 Wells & Dickey Co 160	16 M. Riseva 80	17
1 Res. O. Hoen	2 O. A. Hoen 240	3 E.G. Georgeson 160	4 O.A. Stenberg 160	5 O.J. Stanchelle 160	6 G. Hagen 217	7 Julius Anderson 160	8 Julius Johnson 160	9 Anton Maixner 160	10 Ole P. Wigness 160	11 State Land 160	12 A. Matte 40	13 A. Henke 160	14 A. Maixner 160	15 Henry These 160	16	17
1 E.G. Georgeson 320	2 Martin M. Moen 160	3 G.L. Hope 160	4 John S. Bergrud 160	5 Anna P. Myhre 160	6 John S. Tangen 160	7 H. Tangen 160	8 H. Tangen 160	9 School Land 160	10 Anton Maixner 160	11 William Sheer 160	12 John S. Howland 160	13 Anton Maixner 160	14 School Land 160	15 Anton Maixner 160	16	17
1 John P. Nelson 160	2 A. Holand 160	3 John K. Larson 160	4 G. Tollefson 160	5 Theo. Olstad 160	6 Ole O. Foss 320	7 John J. Rogelstad 160	8 M.J. Hagen 240	9 John S. Howland 240	10 William Sheer 160	11 John S. Howland 160	12 John S. Howland 160	13 John S. Howland 160	14 John S. Howland 160	15 John S. Howland 160	16	17




  
**MAP OF**
  
**TOWNSHIP 150 N., RANGE 71 W.**
  
*of the 5th P. M.*
  
 Scale 1 1/4 inches to 1 mile

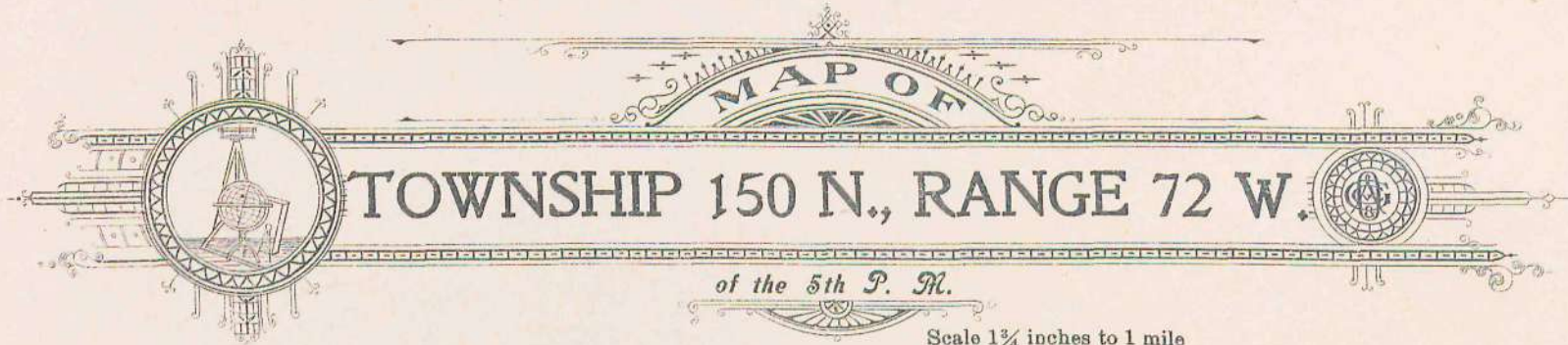
**FRAM TOWNSHIP**

**BENSON**

**CO.**

3939 1 No Dak 3 Realty Co 40	3939 2 Netherland Land & Mtge Co 90	3998 4 G.N. Hoge	4002 2 Nick Halverson 80	4006 2 Vincent M. Adams 80	3998 2 M. Sesmeis 80	3987 4 Thomas Herkoorn 40	4003 1 A. Horland 240	4008 4 Youngblood 80	4006 3 E.T. Saunau 40	4004 2 Austin Regan 40	4002 2 Julius Sehrg 80
3927 6 John Ochs 80	E.J. Leruhn 160	M. Richter 5 160	S. Gundersen 160	G. Kro 240	Karl Wiest 160	Joseph Specht 160	A. Horland 240	T. Erford 120	J.J. Youngblood 40	Soren Estvold 160	
1 John Grund 80	S.K. Rice 160	Peter Olson 160	Hans Vorland 160	Bremen Heindol Vorland 160	John J. Hoveland 160	A. Lespeiser 160	Superson 80	240	Sever Severson 240	B.S. Johnson 160	C.H. Benson 40
3 Jul. Sgutt & M.H. Aved Stephen Wick Cont	P. Volk 160	Karl Wiese Cont 160	John Keller 160	A. Vorland 160	Martin Hoveland 160	Joseph Specht 160	S.T. Lillemon 160	11 School	M.T. Olson 160	William Lemke 40	E. O. Wald 160
1 E. Grund 40	Karl Wiest 160	C.F. Revell 160	H.O. Lillemon 160	Ole Knutson 160	T. Collins 160	J. Specht 160	15 160	S.T. Lillemon 160	H.O. Wihons 120	S. Rognes 160	E.E. Larson 120
2 Jos. Grund 80	W. Wiest 160	W.H. McLaughlin 160	C.F. Revell 160	Schoot Land 160	J. Specht 160	14 160	Ole Riveland 80	Ole Inu 80	G. Jensen 120	Albert Haavig 120	G.P. Meilas 80
3 Stephen Wick Cont	G. Anderson 160	J.O. Hagen 80	J. Keller 160	J. Specht 160	John Fryer 160	A.A. Lee 160	22 80	J. Jensen 80	13 160	John Olson 160	120
4 W. Wiest Cont	T. Dybing 160	K.C. Kopseng 80	G. Anderson 160	S.J. Ekrem 160	S.N. Gilderhus 160	23 160	John Carlson 160	80	C. Asleson 160	120	120
1 Ingred Dybing 80	Res. K.C. Kopseng 160	80	Res. G. Anderson 80	Res. Charles H. Brandt 320	Res. Charles E.L. Soderback 160	27 160	John Fryer 160	School S. Wigan 160	26 160	Saffie J. Portnert 160	Res. G. Rostvedt 160
3 P.J. Egeland 80	T.R. Bole 160	R. Kopseng 80	Ole Brye 240	Charles H. Brandt 320	28 240	27 160	John Fryer 160	Sam Wigan 160	25 160	Ole J. Rodne 160	Res. Ole J. Rostvedt 160
1 Isabella Lietum 240	T.R. Bole 160	J.O. Hagen 160	E.N. Hanson 160	F. Johnson 160	T.R. Overland 160	34 160	G.A. Brauer 160	Ole Riveland 160	S.S. Salheim 160	Ole J. Rodne 160	H. Rodne 160
3 Ben. J. Swan 240	J.J. Seltvedt 160	John Gundersen 160	Res. Gundersen 200	O. Eliertson 160	Jens Gundersen 320	35 320	Ole Rodne 320	Ole Rodne 320	P.O. Floan 320	MANPRED R.E.D. NO. 1	

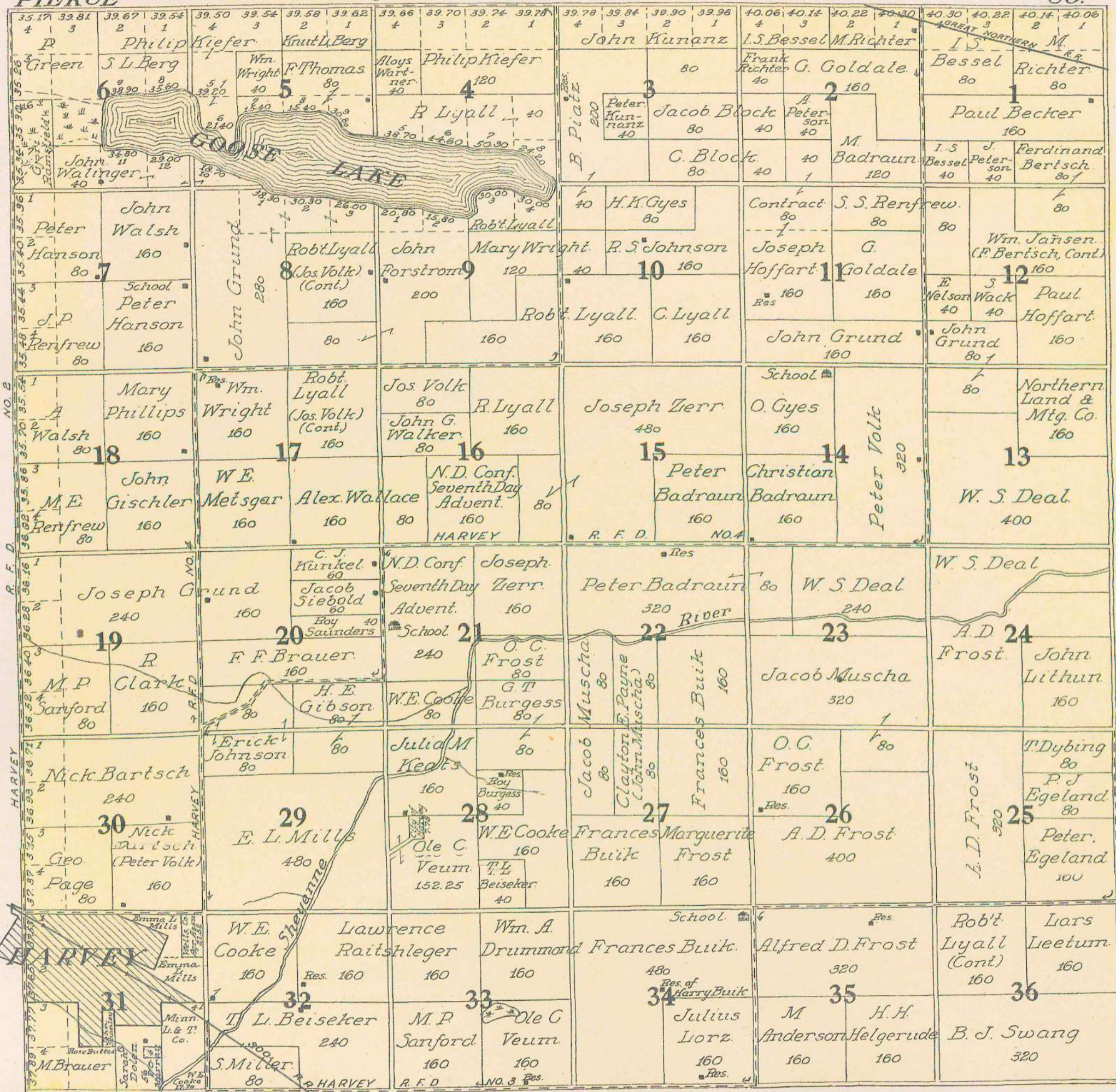



  
**MAP OF**  
**TOWNSHIP 150 N., RANGE 72 W.**  
 of the 5th P. M.  
 Scale 1 3/4 inches to 1 mile

**WELLS TOWNSHIP**

PIERCE

CO.





### HILLSDALE TOWNSHIP

CO.	PIERCE																CO.									
	35.75 4	39.59 3	39.31 2	39.02 1	38.95 4	39.11 3	39.27 2	39.42 1	39.49 4	39.46 3	39.43 2	39.40 1	39.32 4	39.23 3	39.13 2	39.04 1	39.09 4	39.17 3	39.25 2	39.32 1	39.41 4	39.41 3	39.41 2	39.75 1	39.91 1	
	Geo. Eckhart	Neutarth.	Geo. S. Gual.	John Bender	John Bender	Philip Hoes	John Bentz	John Bentz	Geo. Bentz	John Bentz	John Bentz	John Bentz	Mrs. Swiagan	Braunagel	O. H. Willett	A. N. Beiseker	Beiseker	Beiseker	Beiseker	C. Pratt						
	6	80	160	240	240	40	40	120	40	160	160	160	40	80	160	160	160	80	160	80	80	80	80	80	80	80
	Dissard	F. Gauz.		Peter McMahon	Annie Meyhus					E. M. Sween	Rasmussen	J. P. Renfrew	John May													
	7	80		8	9					320	160	160	160	160	160	160	160	160	160	160	160	160	160	160	160	160
	Ed. Schatz			Rosa Clark	LEVEL LANE FARM	M. Nelsen	Nichols & Shepards	M. Nelson	Nichols & Shepards																	
				160	280	80	160	80	160	160	160	160	160	160	160	160	160	160	160	160	160	160	160	160	160	160
	B. A. Southall			John Paulson	O. L. Jensen					H. Lillemor	O. L. Jensen	Lena C. Hanson														
	18	240		17	16					320	160	160	160	160	160	160	160	160	160	160	160	160	160	160	160	160
	Chas. Blanding			P. L. Houde	H. C. Lillemor																					
	Carl Jaros			Ole Sorenson	Gust Nichols	H. C. Lillemor																				
	80	160	80	80	160	240	240	160	240	160	160	160	160	160	160	160	160	160	160	160	160	160	160	160	160	160
	E. Gunderson			John Jorgenson																						
	120			240																						
	Nellie Wolding			Ole Aas																						
	80	80	80	360																						
	C. M. Heie			S. Wanger																						
	160	40	40	120																						
	E. Gunderson			Nels Heskin	WANGEN DALEY FARM	S. Superson	L. O. Loken																			
	120			160	160	160	160	160	160	160	160	160	160	160	160	160	160	160	160	160	160	160	160	160	160	160
	N. Johnson			C. Balliet	Anton Jorgenson	A. S. Wanger																				
	160	160	120	160	160	160	80	80	80	80	80	80	80	80	80	80	80	80	80	80	80	80	80	80	80	80
	Pete. Hocking			Anton Jorgenson	A. S. Wanger																					
	160	160	120	160	160	160	80	80	80	80	80	80	80	80	80	80	80	80	80	80	80	80	80	80	80	80
	blaf Wolding			C. Balliet	Anton Jorgenson	A. S. Wanger																				
	80	160	120	160	160	160	80	80	80	80	80	80	80	80	80	80	80	80	80	80	80	80	80	80	80	80
	blaf Wolding			A. S. Krosoakken	Christiar. Dahle																					
	80	40	40	80	80	80	80	80	80	80	80	80	80	80	80	80	80	80	80	80	80	80	80	80	80	80
	Ole Sorenson			Ole Christensen	K. K. Folken																					
	160	40	40	80	160	80	80	80	80	80	80	80	80	80	80	80	80	80	80	80	80	80	80	80	80	80
	Gjerde			Ole J. Stendahl	A. Aaker																					
	160	40	40	120	80	80	80	80	80	80	80	80	80	80	80	80	80	80	80	80	80	80	80	80	80	80
	Ole Sorenson			Ole Stendahl	A. Aaker																					
	160	40	40	120	80	80	80	80	80	80	80	80	80	80	80	80	80	80	80	80	80	80	80	80	80	80
	Ole Sorenson			Ole Stendahl	A. Aaker																					
	160	40	40	120	80	80	80	80	80	80	80	80	80	80	80	80	80	80	80	80	80	80	80	80	80	80
	Ole Sorenson			Ole Stendahl	A. Aaker																					
	160	40	40	120	80	80	80	80	80	80	80	80	80	80	80	80	80	80	80	80	80	80	80	80	80	80
	Ole Sorenson			Ole Stendahl	A. Aaker																					
	160	40	40	120	80	80	80	80	80	80	80	80	80	80	80	80	80	80	80	80	80	80	80	80	80	80
	Ole Sorenson			Ole Stendahl	A. Aaker																					
	160	40	40	120	80	80	80	80	80	80	80	80	80	80	80	80	80	80	80	80	80	80	80	80	80	80
	Ole Sorenson			Ole Stendahl	A. Aaker																					
	160	40	40	120	80	80	80	80	80	80	80	80	80	80	80	80	80	80	80	80	80	80	80	80	80	80
	Ole Sorenson			Ole Stendahl	A. Aaker																					
	160	40	40	120	80	80	80	80	80	80	80	80	80	80	80	80	80	80	80	80	80	80	80	80	80	80
	Ole Sorenson			Ole Stendahl	A. Aaker																					
	160	40	40	120	80	80	80	80	80	80	80	80	80	80	80	80	80	80	80	80	80	80	80	80	80	80
	Ole Sorenson			Ole Stendahl	A. Aaker																					
	160	40	40	120	80	80	80	80	80	80	80	80	80	80	80	80	80	80	80	80	80	80	80	80	80	80
	Ole Sorenson			Ole Stendahl	A. Aaker																					
	160	40	40	120	80	80	80	80	80	80	80	80	80	80	80	80	80	80	80	80	80	80	80	80	80	80
	Ole Sorenson			Ole Stendahl	A. Aaker																					
	160	40	40	120	80	80	80	80	80	80	80	80	80	80	80	80	80	80	80	80	80	80	80	80	80	80
	Ole Sorenson			Ole Stendahl	A. Aaker																					
	160	40	40	120	80	80	80	80	80	80	80	80	80	80	80	80	80	80	80	80	80	80	80	80	80	80
	Ole Sorenson			Ole Stendahl	A. Aaker																					
	160	40	40	120	80	80	80	80	80	80	80	80	80	80	80	80	80	80	80	80	80	80	80	80	80	80
	Ole Sorenson			Ole Stendahl	A. Aaker																					
	160	40	40	120	80	80	80	80	80	80	80	80	80	80	80	80	80	80	80	80	80	80	80	80	80	80
	Ole Sorenson			Ole Stendahl	A. Aaker																					
	160	40	40	120	80	80	80	80	80	80	80	80	80	80	80	80	80	80	80	80	80	80	80	80	80	80
	Ole Sorenson			Ole Stendahl	A. Aaker																					
	160	40	40	120</																						