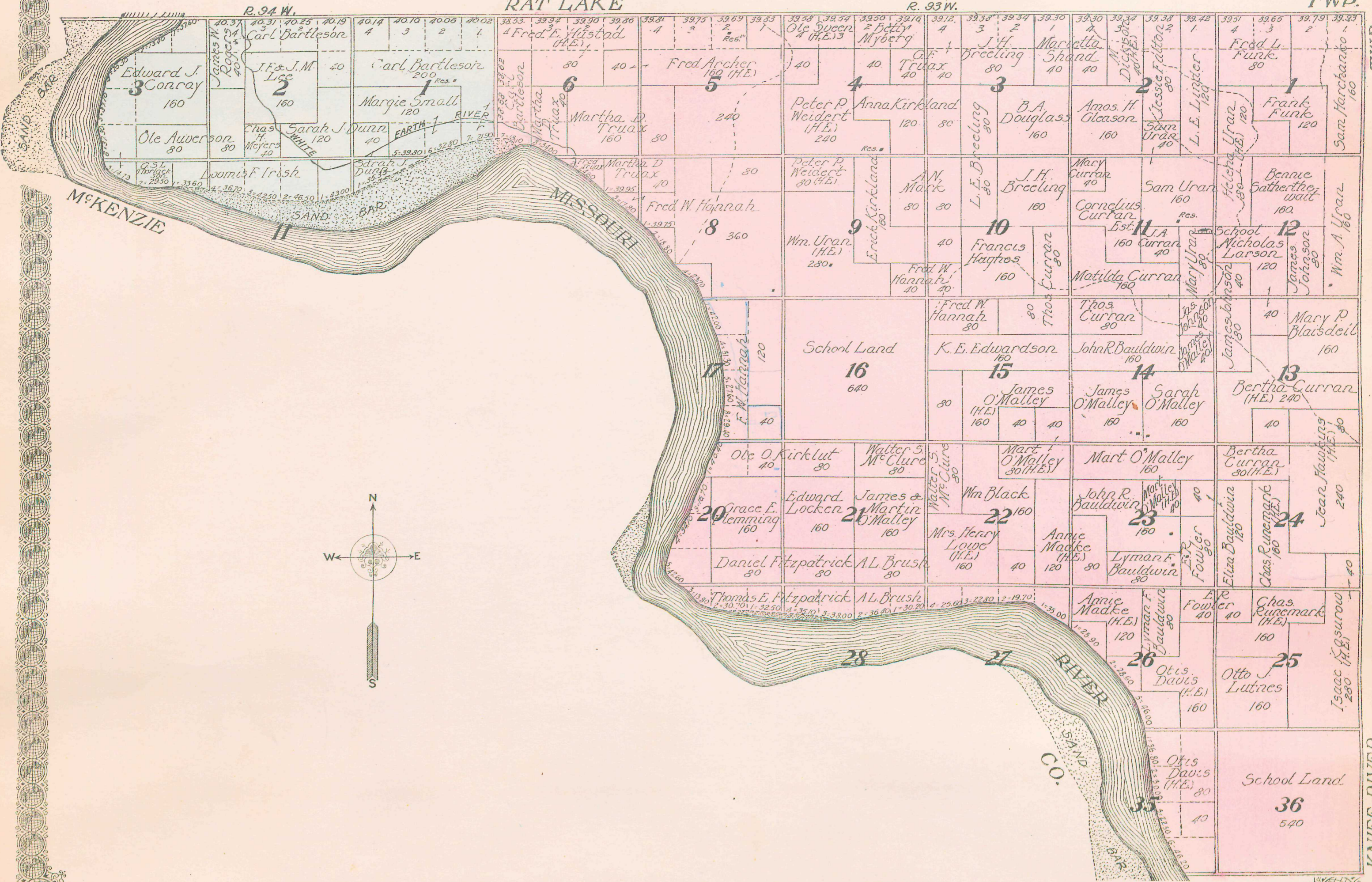

  
**MAP OF**
  
**PART of TOWNSHIP 153 N., RANGES**
  
**93 and 94 W.**
  
**OF THE 5th P. M.**

Scale 1 1/4 inches to 1 mile

50

TWP.



TWP.

KNIFE RIVER

MAP OF  
 TOWNSHIP 153 N., RANGE 92 W.  
 OF THE 5th P. M.  
 Scale 1 1/4 inches to 1 mile

KNIFE RIVER



TWP.

CRANE CREEK



MAP OF  
TOWNSHIP 153 N., RANGE 90 W.  
OF THE 5th P. M.

Scale 1/4 inches to 1 mile

WAYZETTA



PARSHALL

SHELL



