

Hollywood Cemetery Association

OFFICERS:

S. H. Watson, *President*
Harry W. Watson, *Vice President and Secretary*
Pearl Brooks, *Treasurer*
W. M. Strother, *Superintendent*

DIRECTORS:

Willis H. Booth
Chas. H. Toll
J. W. Wilcox
Pearl Brooks
W. M. Strother
S. H. Watson
Harry W. Watson



ENTRANCE, SANTA MONICA BOULEVARD

Invitation

Hollywood Cemetery Association

Invites your inspection of their Cemetery

AS A VISITOR—

To bring your attention to the fact that Los Angeles has in Hollywood Cemetery the most beautiful and modern cemetery on the Pacific Coast.

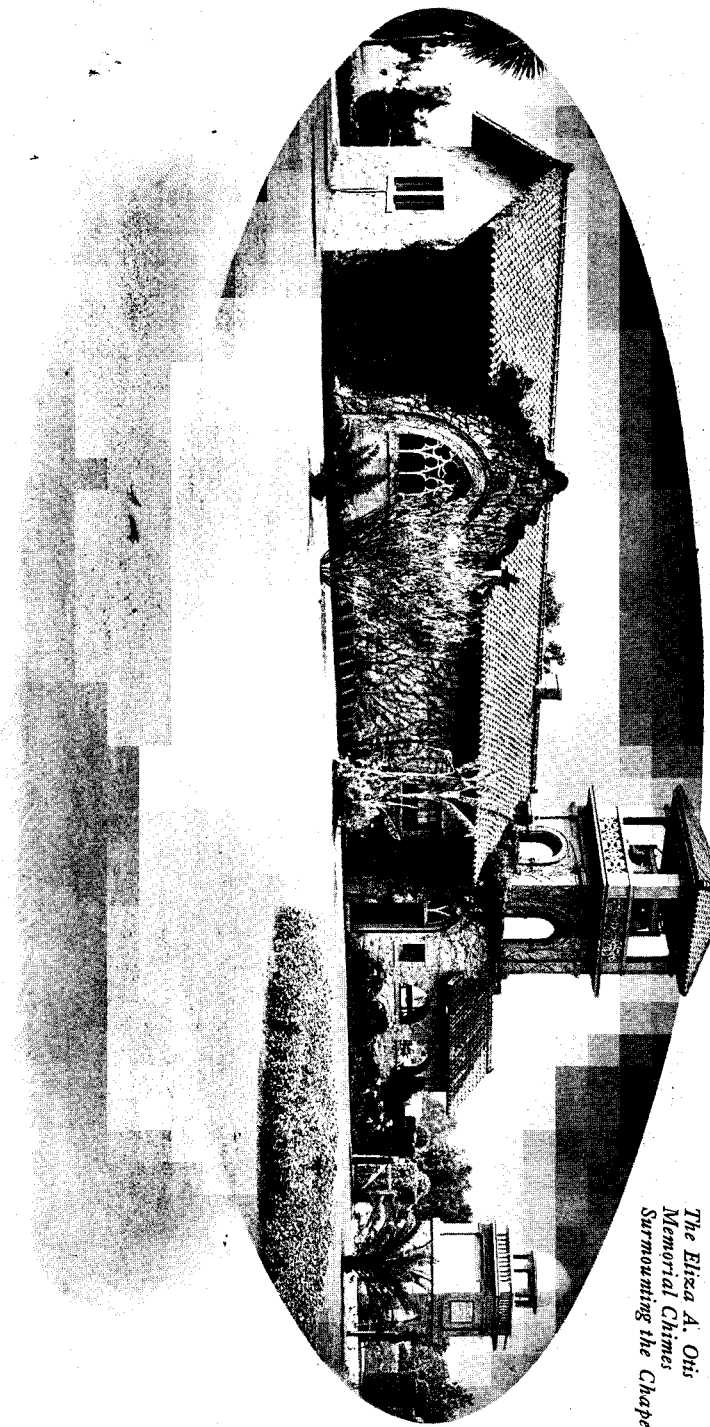
IF AN INTENDING PURCHASER—

To be convinced that a plat in this beautiful cemetery, all of which is under perpetual care, would be most desirable.

IF A LOT OWNER—

To see the growing beauty of the cemetery, the splendid care which is being taken of your holdings, and the marked improvement constantly being made.

CHAPEL AT SANTA MONICA BOULEVARD ENTRANCE



*The Eliza A. Otis
Memorial Chimes
Surmounting the Chapel*

To Reach Hollywood Cemetery

BY CARS:

Take Colegrove car on Fourth Street to main entrance; or, Melrose car running south on Broadway and west on Seventh Street.

BY AUTO OR CARRIAGE:

Wilshire Boulevard to Western Avenue, north on Western Avenue to Santa Monica Boulevard, west to entrance; or, Sunset Boulevard to Lemona Street, south to Santa Monica Boulevard, west to entrance.

IDEAL LOCATION:

In the shadow of Mt. Hollywood, nestled among the foothills, quietly situated far from the city's dust and din, a distance of about seven miles from the heart of Los Angeles, accessible by both the Colegrove and the Melrose Avenue car lines, and reached by the beautiful Wilshire and Sunset Boulevards—for auto or carriage—secluded, yet easily accessible—lies Los Angeles' most modern burial park, Hollywood Cemetery.